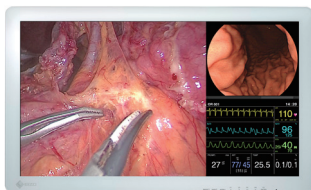


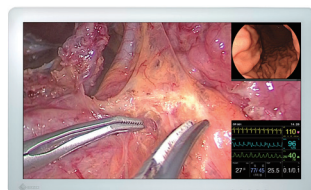
## A 26-inch wide screen surgical monitor with full HD display and three screen support.

### View Up to Three Signals on the One Screen

View up to three separate signal sources simultaneously on one monitor screen using the PoP (Picture out Picture) function. Conversely, display up to two additional signals in corners on top of the main signal display — creating a total of three visible inputs — using PiP (Picture in Picture). The size and position of these displays is adjustable when using either PoP or PiP. This is useful when several images need to be viewed at once, such as multiple modalities.



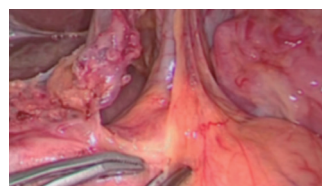
PoP



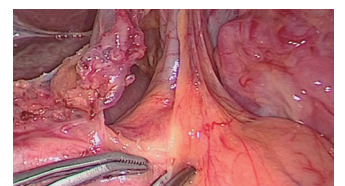
PiP

### Enhanced Sharpness

The EX2621 is installed with EIZO's proprietary image sharpening technology 'Smart Resolution with Sparse Coding (S.R.S.C.)'. Images shot by low resolution endoscopy and surgical cameras can be displayed in full HD resolution without any lag, making use of the monitor's full HD resolution.



Without S.R.S.C.



With S.R.S.C.

# CuratOR® EX2621

## High Definition Surgical Display

This monitor uses an LCD panel with an energy-efficient LED backlight, a brightness of 700 cd/m<sup>2</sup> and a contrast ratio of 1400:1. It displays in full HD resolution (1920 x 1080 pixels), and faithfully reproduces surgical images in high definition for endoscopy and operation microscope feeds.

## Fully Flat Design for Safety and Hygiene

Operating rooms contain various medical devices that are arranged by the type of surgery being undertaken. In consideration of safety, EIZO's surgical monitors adopt rounded corners. Furthermore the front is covered with a fully flat protective glass that has protection against foreign material and splashes to a level of IP45 (whole monitor has IP32 rating). Additionally with the attached cable cover, cables can be stored neatly out of sight, increasing safety and hygiene in the operating room.

## Comfortably View from Any Angle

It has a viewing angle of 178 degrees so images can be viewed from various directions with minimal changes in contrast.

## Rotate or Mirror the Display to Your Needs

Regardless of the orientation of the surgical camera, you can rotate the displayed image by 180 degrees or mirror it to find the perfect operating view. This is suitable for matching the image with the line of site of surrounding assistants and surgeons, improving convenience in the operating room.

## Adjust Screens Independently from Each Other

When displaying two or three signal sources side by side on the same screen, each image's display mode (gamma 1.8 - 2.6 or DICOM® Preset Mode) can be adjusted without interfering with the other image. This is perfect for multi-modality use, where both endoscope, CT and MRI images can be accurately displayed on the same monitor.

## Independent Rotation and Mirroring

When displaying two or three signals at the same time, each display can be rotated 180 degrees or mirrored independently from the other.

## Protective Panel for Damage Protection

The monitor is covered with a protective panel which helps protect the LCD screen from shock, scratches and dirt.

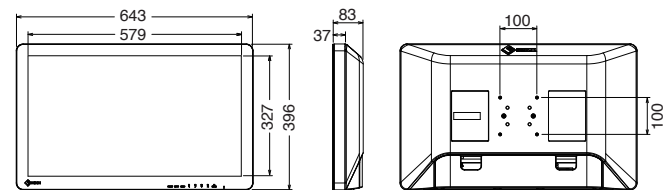
## Various Input/Output Signal Support

The monitor supports various video input/output signals for connecting to various types of modality equipment. This means that multiple inputs can be viewed simultaneously. Furthermore GPI and RS-232C allows you to externally control input signals and screen rotation, so that you can change the display in conjunction with the settings of the surgical equipment being used.

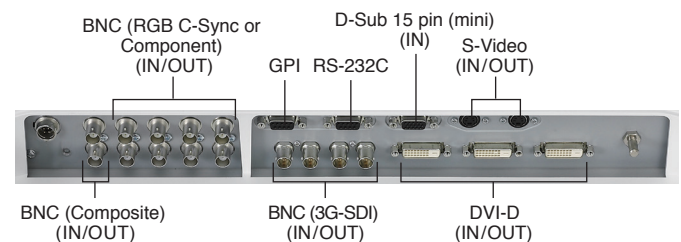
## Specifications

Panel	Type	Color (IPS)
	Backlight	LED
	Size	66.1 cm / 26.0"
	Native Resolution	1920 x 1080 (16:9 aspect ratio)
	Viewable Image Size (H x V)	576 x 324 mm
	Pixel Pitch	0.300 x 0.300 mm
	Display Colors	10-bit colors (SDI): 1.07 billion (maximum) colors 8-bit colors: 16.77 million colors
	Viewing Angles (H / V, typical)	178° / 178°
	Brightness (typical)	700 cd/m <sup>2</sup>
	Contrast Ratio (typical)	1400:1
Response Time (typical)	18 ms (on / off)	
Video Signals	Input Terminals	BNC (3G-SDI) x 2, BNC (Composite) x 1, BNC (RGB C-Sync or Component) x 1 set, S-Video x 1, DVI-D x 2 (with HDCP), D-Sub 15 pin (mini) x 1
	Output Terminals	BNC (3G-SDI) x 2, BNC (Composite) x 1, BNC (RGB C-Sync or Component) x 1 set, S-Video x 1, DVI-D x 1
	Digital Scanning Frequency (H / V)	15 - 75 kHz / 24 - 60 Hz
	Analog Scanning Frequency (H / V)	15 - 80 kHz / 24 - 85 Hz
	Sync Formats	Separate, Composite, Sync on green
Power	Power Requirements	AC 100 - 240 V: 50 / 60 Hz
	Maximum Power Consumption	96 W
Features & Functions		Remote control (RS-232C, GPI)
Physical Specifications	Net Weight (Without Stand)	8.4 kg
	Hole Spacing (VESA Standard)	100 x 100 mm, M4, depth 5 - 9 mm
Environmental Requirements	Degree of Protection	IP45 (Front), IP32 (Rear)
Certifications & Standards (Please contact the EIZO group company or distributor in your country for the latest information.)		CE (Medical Device), EN60601-1, ANSI/AAMI ES60601-1, CSA C22.2 No. 601-1, IEC60601-1, VCCI-A, FCC-A, CAN ICES-3(A), RCM, RoHS, China RoHS, WEEE, CCC, EAC, BIS
FDA		Class I
Supplied Accessories (May vary by country. Please contact EIZO for details.)		AC power cord, AC adapter, Cable cover, Utility Disk (PDF installation manual), instructions for use
Warranty		Two Years

## Dimensions (Unit: mm)



## Connector



You will find your EIZO contact partner at:  
[www.eizo-or.com/contact](http://www.eizo-or.com/contact)

All product names are trademarks or registered trademarks of their respective companies. EIZO, the EIZO Logo, and CuratOR are registered trademarks of EIZO Corporation. DICOM is the registered trademark of the National Electrical Manufacturers Association for its standards publications relating to digital communications of medical information. Screen provided by Shizuoka Cancer Center. Specifications are subject to change without notice.